

Kimberly & Woodruff House

2 Bedroom
Apartments in a Quiet
Neighborhood



Located in the Groesbeck neighborhood in northeast Lansing, the Kimberly and Woodruff House apartments offer exceptional comfort and value. Nestled in a quiet, established neighborhood, the Kimberly and Woodruff Houses are convenient to shopping (at Frandor and Eastwood Towne Center), schools, major freeways, and Michigan State University. Along with exceptional maintenance and grounds these quality apartments offer an ideal location at a great value.

amberapartments.com

Leasing Center 2601 East Grand River Lansing MI 48912

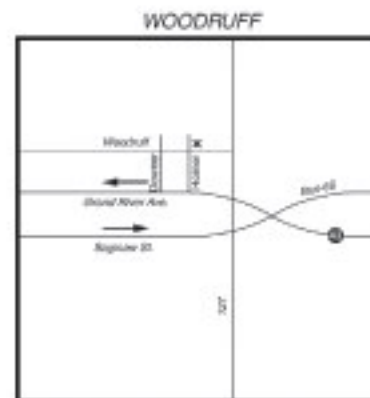
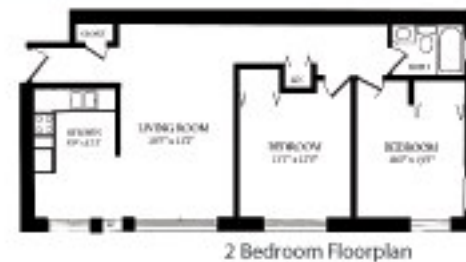
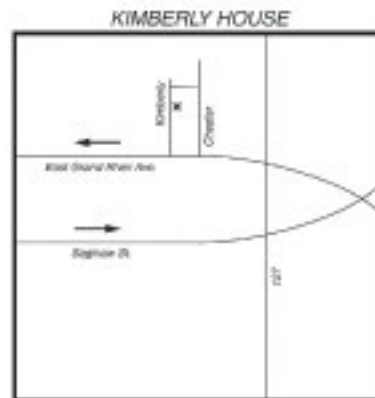
(517) 372-2000 Fax (517) 372-0063 e-mail: leasing@amberapartments.com



1111 Kimberly & 3009 Woodruff Lansing MI 48912

Kimberly & Woodruff House

- Ideally located in the Groesbeck neighborhood (great for walking or jogging)
- Spacious 2 bedroom apartments
- Heat & hot water paid
- Air conditioning
- Hardwood floors or carpeting
- Carports
- In-building laundry facilities
- Additional storage
- Feline friends welcome
- Intercom entry



Application Fee: \$50
Security Deposit: 1 Month Rent

Prep Fee: \$150
Pet Fee: \$150
\$15/mo

1111 Kimberly & 3009 Woodruff Lansing MI 48912

Kimberly & Woodruff House